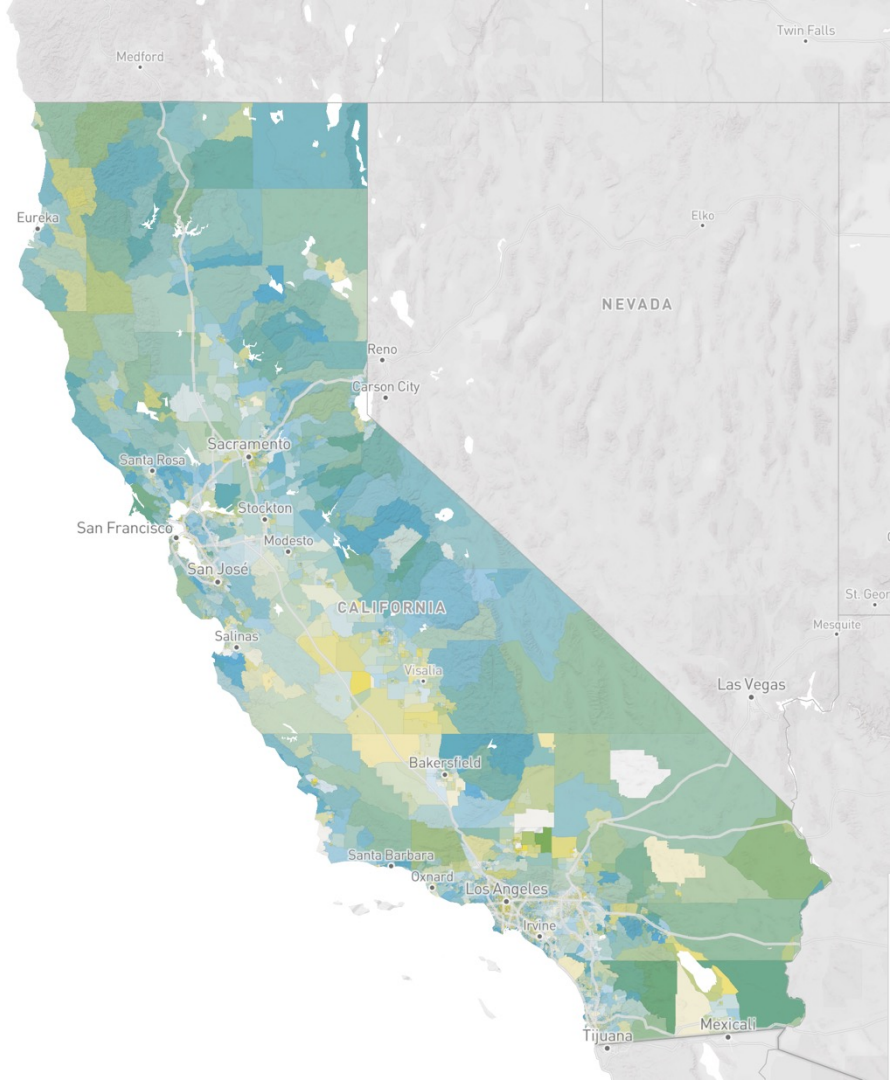


UCSF HEALTH ATLAS

healthatlas.ucsf.edu

When it comes to health, place matters.

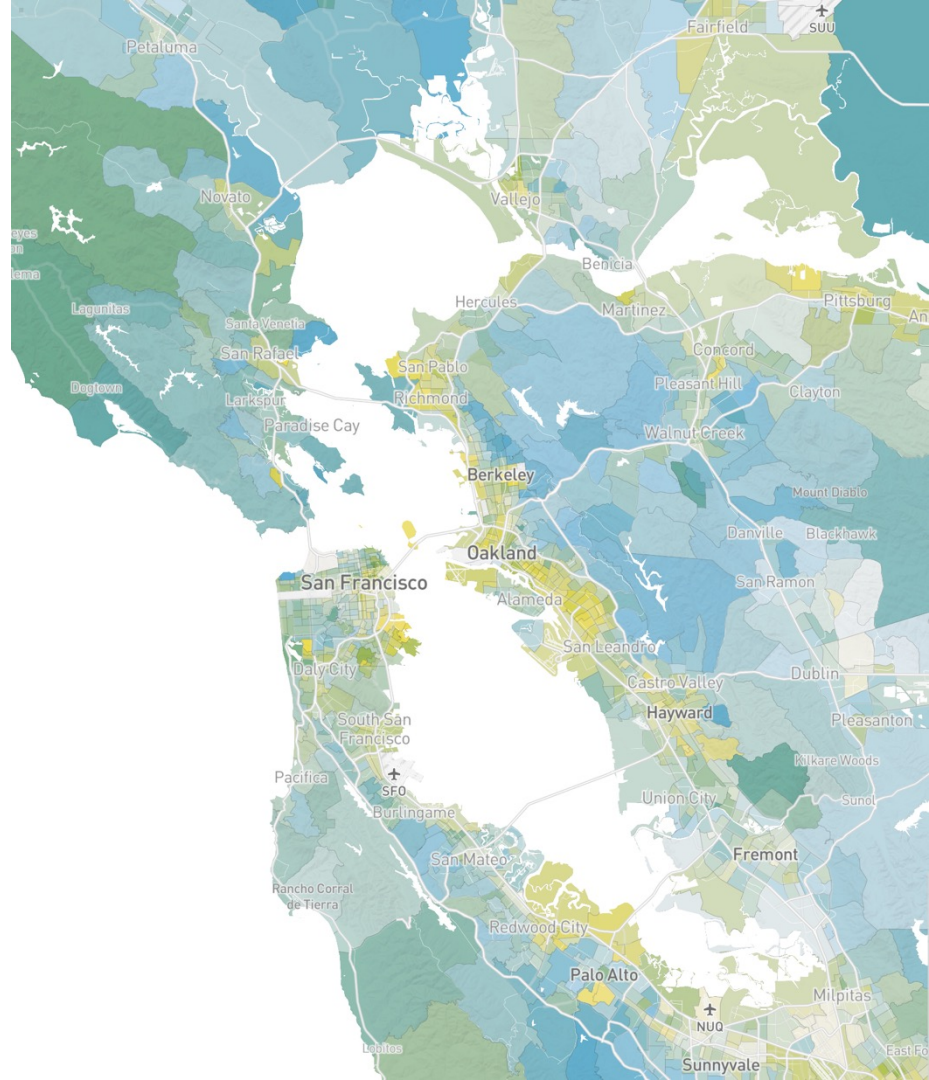
Where we live, including the physical and social environments that surround us, influences health in both positive and negative ways.



UCSF HEALTH **ATLAS**

Interactive map of over 100 variables to explore neighborhood-level characteristics and see how they relate to health at a population level.

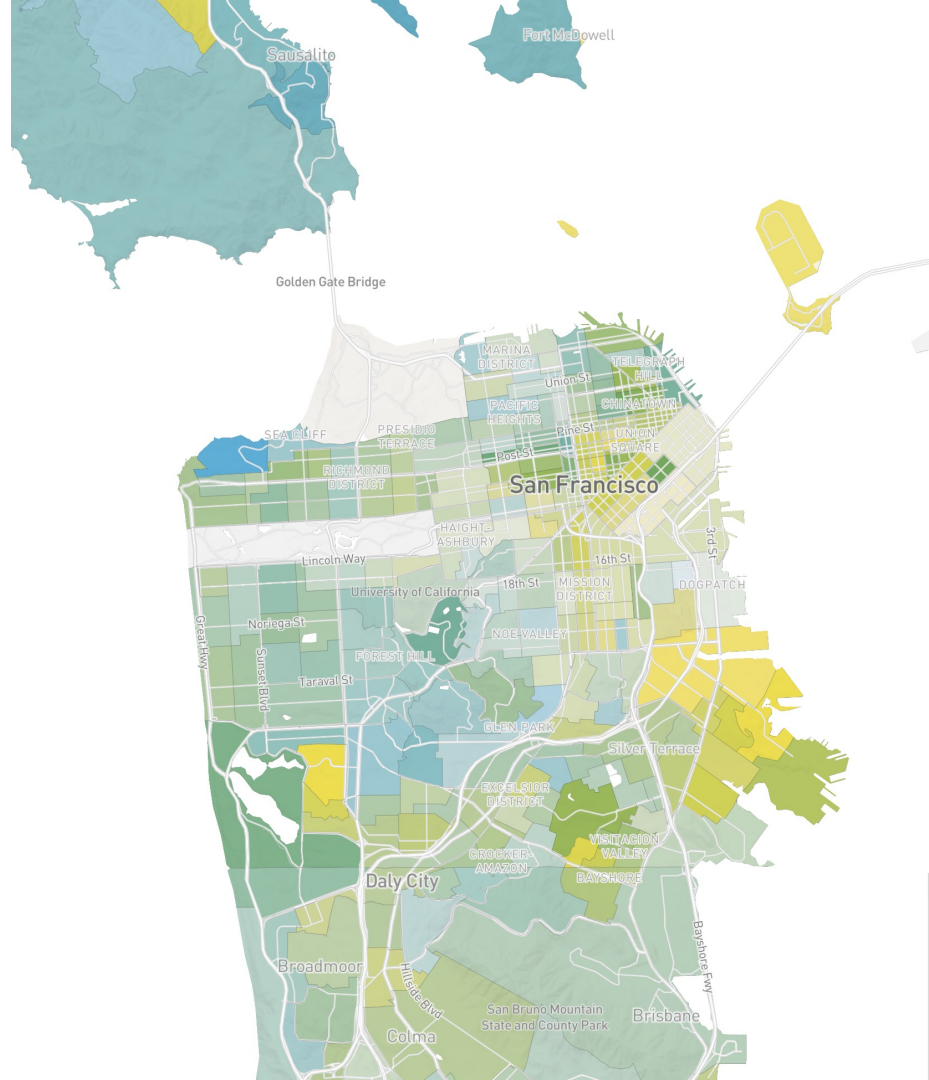
healthatlas.ucsf.edu

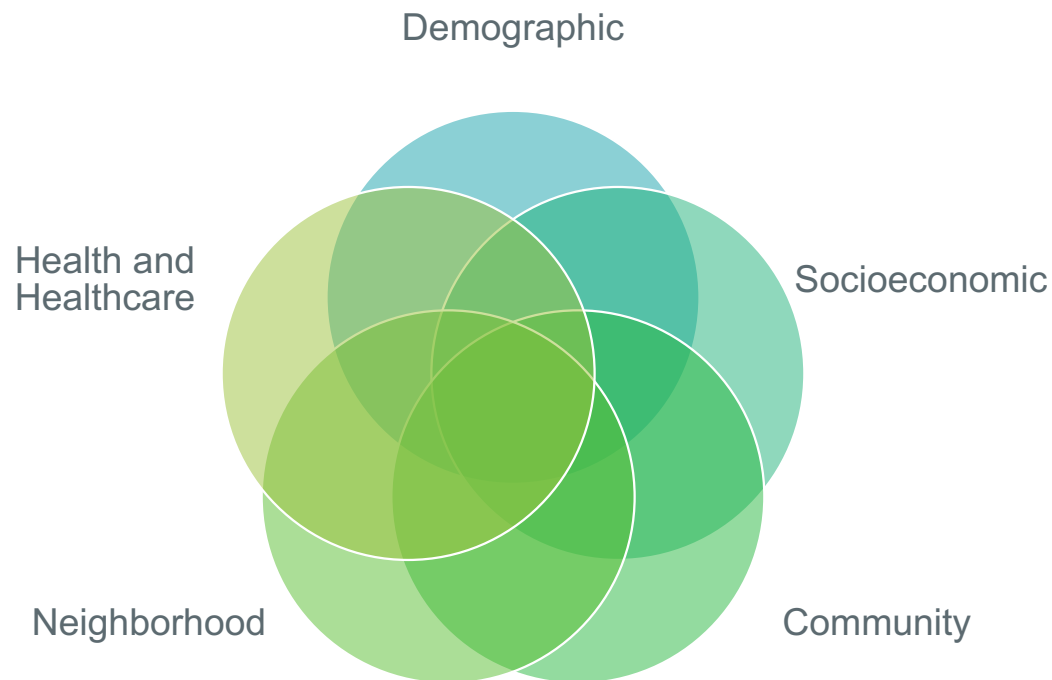


Health Atlas features:

- Census tract, zip code, place, and county level maps
- 2010 Census and 2020 Census geographies
- Comparison of two variables
- Visualization of data distributions
- Custom area selection
- Data export
- Detailed data descriptions
- Data stories

healthatlas.ucsf.edu





Data Sources

- **American Community Survey**
- **Los Angeles Times**
- **California Department of Public Health (CDPH), Coronavirus Science Branch**
- **CDC PLACES**
- CDPH Healthy Communities Data and Indicators Project
- Feeding America Map the Meal Gap
- California Neighborhoods Data System
- Opportunity Atlas
- CDC National Vital Statistics System
- HUD Comprehensive Housing Affordability Strategy Data
- Eviction Lab
- Cal EnviroScreen
- USDA Economic Research Service
- USDA Food Access Research Atlas
- Centers for Disease Control National Vital Statistics System
- Health Resources and Services Administration, National Health Service Corps
- CDPH Climate Change and Health Vulnerability Indicators for California
- UC Berkeley Labor Center
- National Historical Geographic Information System
- Public Health Alliance of Southern CA
- University of Michigan, Institute for Social Research
- National Cancer Institute grants U01 CA164973 & 5U01CA164973-08

Visualizing one variable

Census Tracts

ZIP Codes

Counties

Places

2010 Census Shapes

2020 Census Shapes

Select an area

Draw a shape

Common areas

0 tracts selected

Poverty among all individuals

13.4%

0

47.2

Socioeconomic Indices

0

Poverty

0

Poverty among all families

9.6%

Poverty among all families with children under 5

11.4%

Poverty among all individuals

13.4%

Percent of the population with income below poverty level in the past 12 months (American Community Survey 5-Year Estimates, 2015-2019)

Poverty among individuals under 18

18.1%

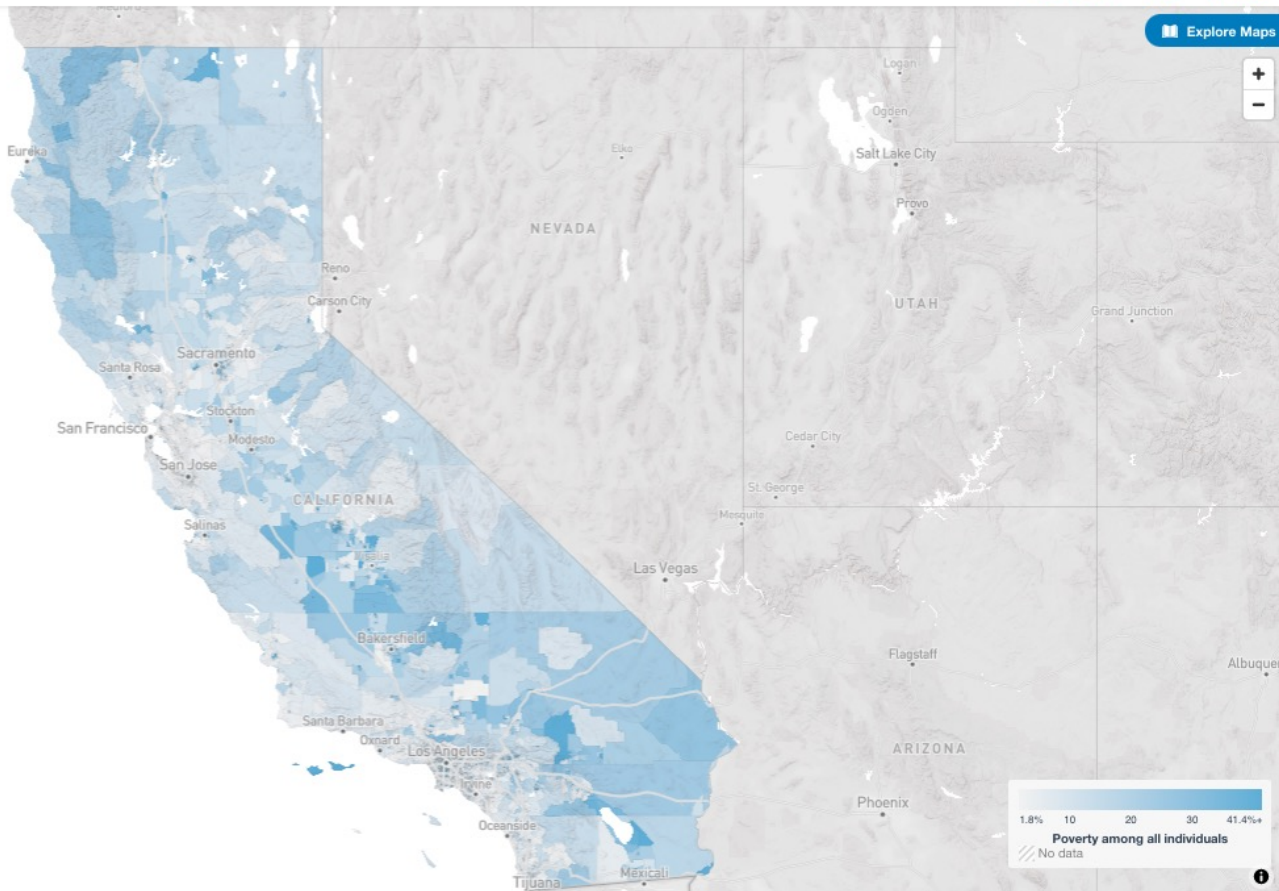
Poverty among individuals over 65

10.2%

Extremely low income households

16.2%

Add a second characteristic



Comparing two variables

Census Tracts

ZIP Codes

Counties

Places

2010 Census Shapes

2020 Census Shapes

Select an area

Draw a shape

Common areas

0 tracts selected

Poverty among all individuals

13.4%

047.2

Asthma

9.0%

612.2

Health and Health Care

Health Outcomes

Disability

10.6%

Arthritis

20.2%

High blood pressure

27.0%

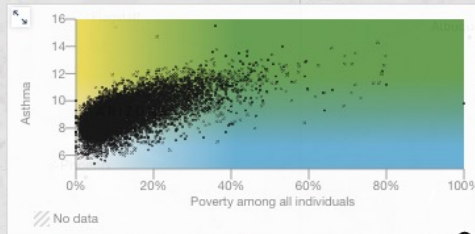
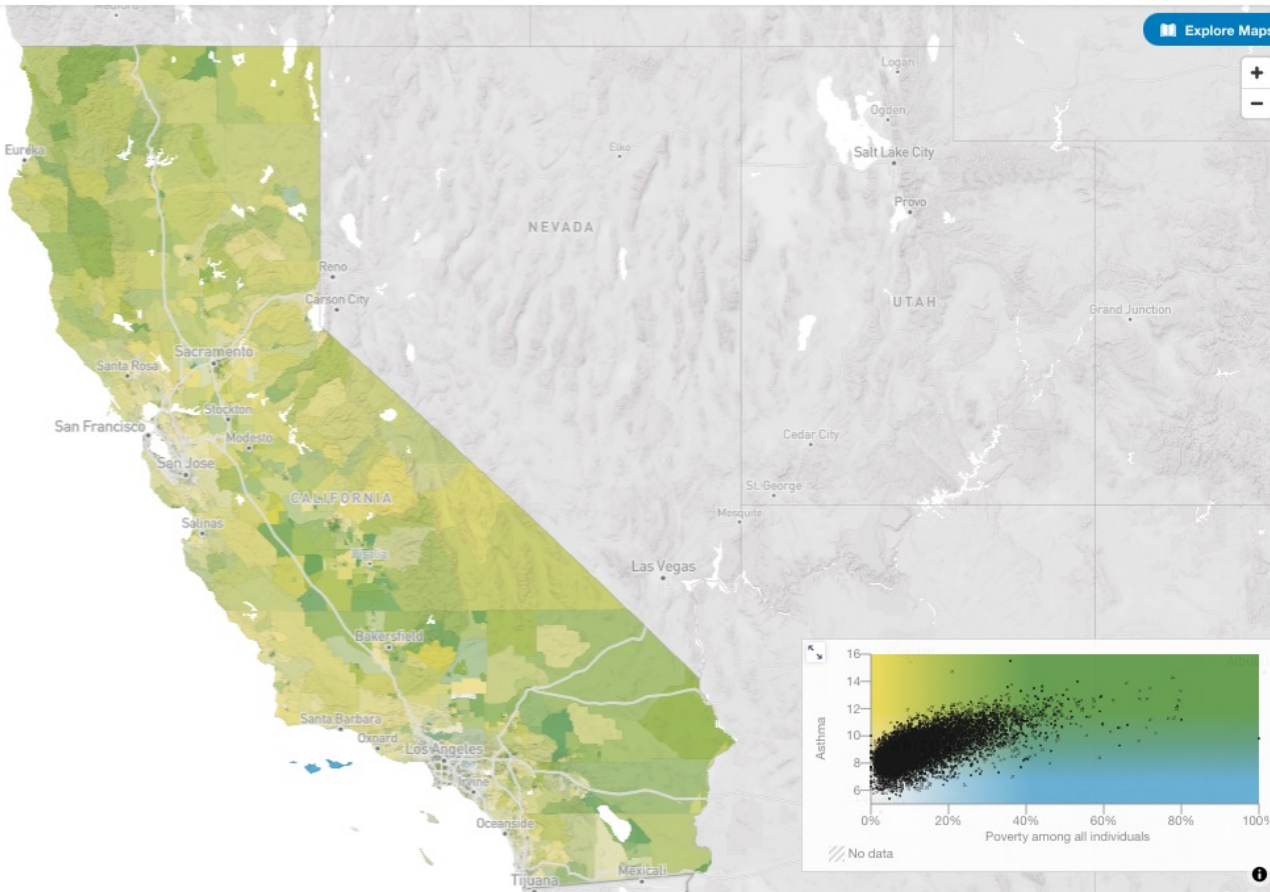
Asthma

9.0%

Current asthma among adults over 18
(PLACES Project, Centers for Disease Control and Prevention, 2020.)

Coronary heart disease

5.1%



Exploring data distributions

Census Tracts

ZIP Codes

Counties

Places

2010 Census Shapes

2020 Census Shapes

Select an area

Draw a shape

Common areas

0 tracts selected

Poverty among all individuals

13.4%

0

47.2

Asthma

9.0%

6

12.2

Health and Health Care

Health Outcomes

Disability

10.6%

Arthritis

20.2%

High blood pressure

27.0%

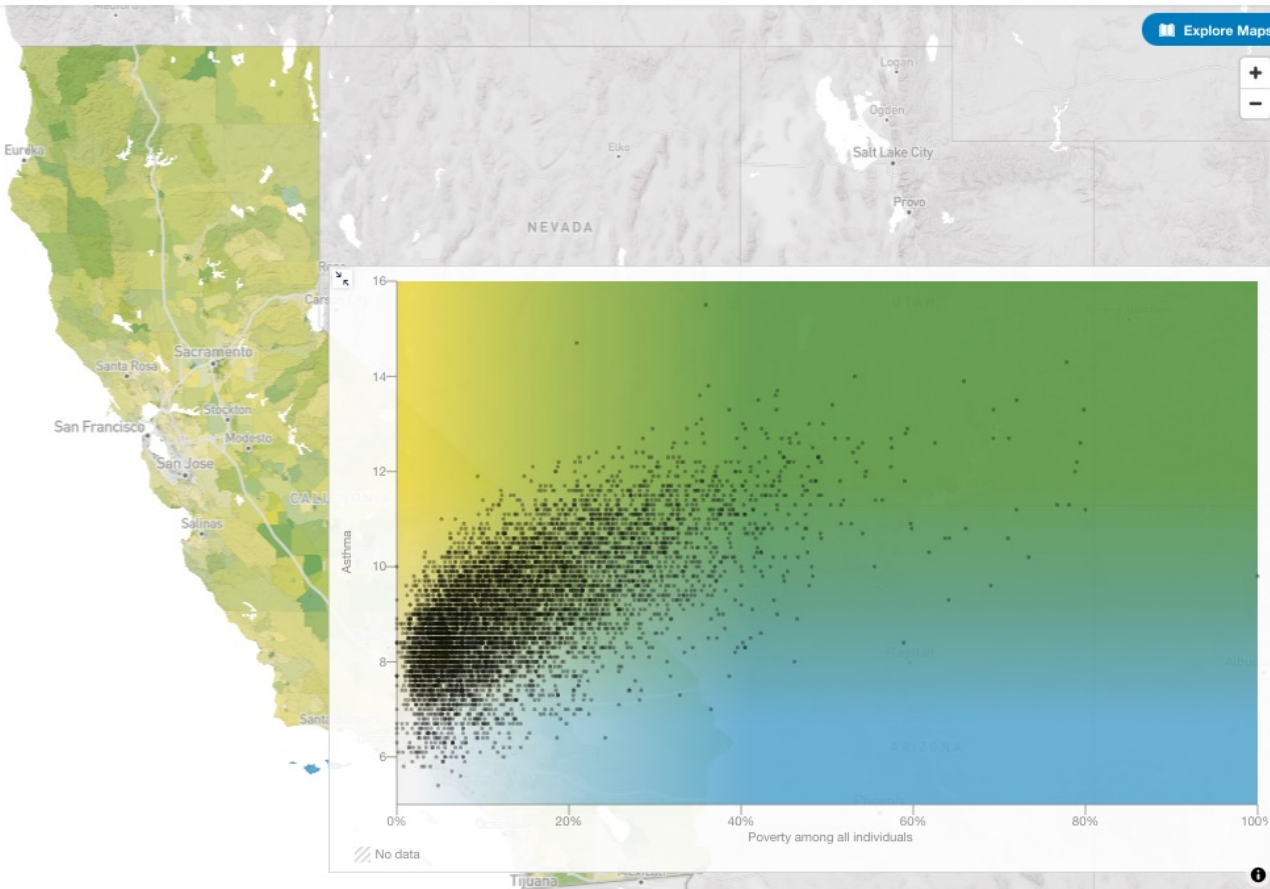
Asthma

9.0%

Current asthma among adults over 18
(PLACES Project. Centers for Disease Control and Prevention, 2020.)

Coronary heart disease

5.1%



Custom area selection

Census Tracts

ZIP Codes

Counties

Places

2010 Census Shapes

2020 Census Shapes

Select an area

Draw a shape

Common areas

Clear

11 tracts selected

Edit

Poverty among all individuals

17.8 13.4%

Asthma

9.4 9.0%

Health and Health Care

Health Outcomes

Disability

10.5 10.6%

Arthritis

19.2 20.2%

High blood pressure

31.3 27.0%

Asthma

9.4 9.0%

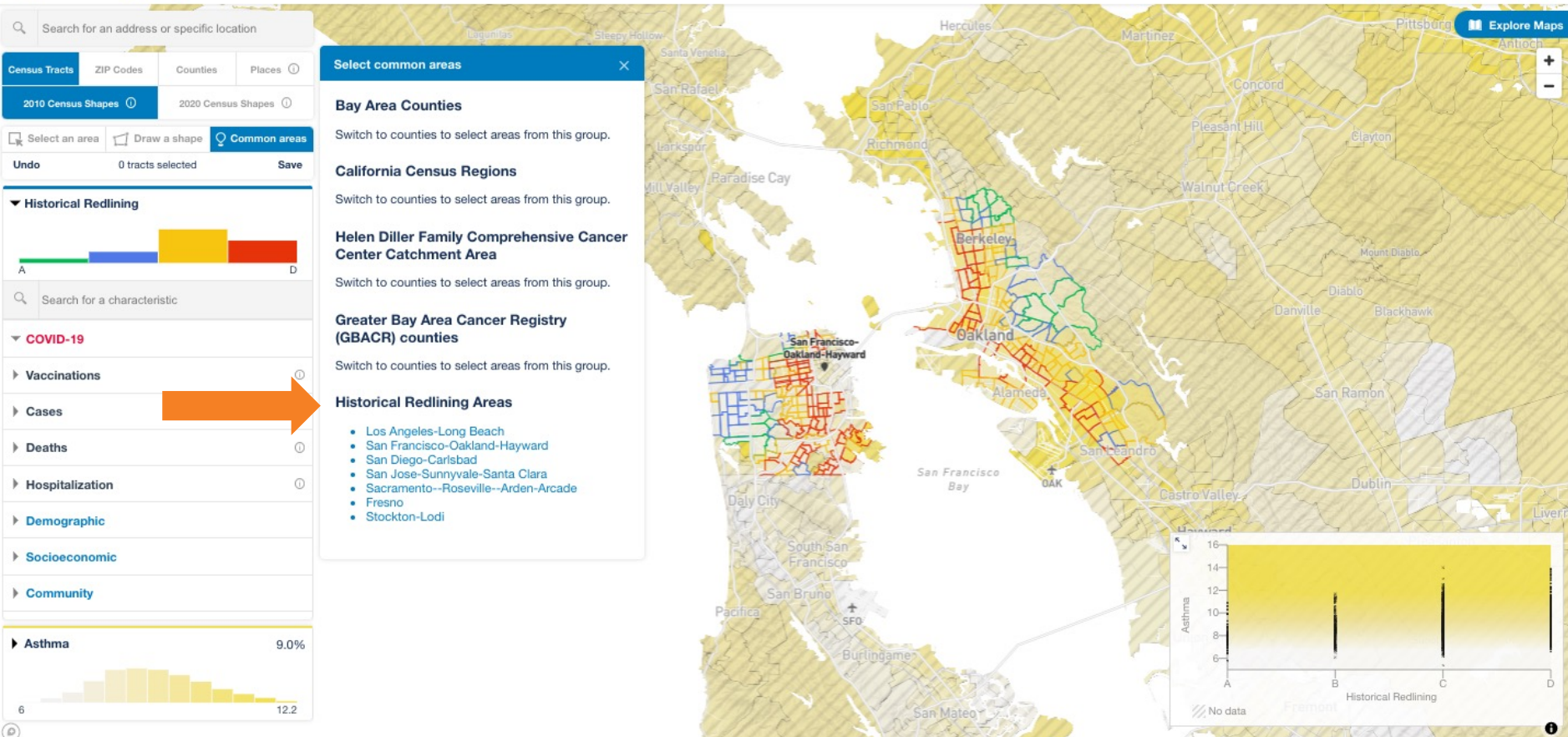
Current asthma among adults over 18
(PLACES Project. Centers for Disease Control and Prevention, 2020.)

Coronary heart disease

5.5 5.1%



Selecting common areas



Exporting data

Search for an address or specific location

Census Tracts ZIP Codes Counties Places

2010 Census Shapes 2020 Census Shapes

Select an area Draw a shape Common areas

Undo Clear 308 tracts selected Edit

Historical Redlining

A

D

Search for a characteristic

COVID-19

Vaccinations

Cases

Deaths

Hospitalization

Demographic

Socioeconomic

Community

Asthma 8.5 9.0% 6 12.2

Export Data

ONLY INCLUDE SELECTED REGIONS

Geography Type	Groups	Subgroups	Characteristics
Census Tracts (3)	Demographic	Housing (2)	Severe rent burden among renter-occupied households
ZIP Codes	Socioeconomic	Environmental Health	Severe rent burden among extremely low income households
Counties	Community	Other	Median rent
Places	Neighborhood (2)	Built Environment	Eviction filing rate
	Health and Health Care (1)		Eviction rate
			Historical Redlining (Continuous)
			Historical Redlining (Categorical)

Note: COVID data is not included in this data export. Please see the relevant data sources for the latest data: [California Department of Public Health](#) for hospitalization data, and [Los Angeles Times](#) for vaccinations, cases, deaths, nursing homes, and prisons.

Download Data

Download Data Dictionary

Walnut Creek

Lafayette

Danville

Diablo

San Ramon

Haystack Park

South San Francisco

San Bruno

Explore Maps

+

-

Asthma

Historical Redlining

No data

1

UCSF HEALTHATLAS

Search for an address or specific location

2010 Census Shapes 2020 Census Shapes

Undo 0 tracts selected

 Search for a characteristic

► **Vaccinations** ⓘ

► **Cases** ⓘ

▶ **Deaths** ⓘ

► Hospitalization ⓘ

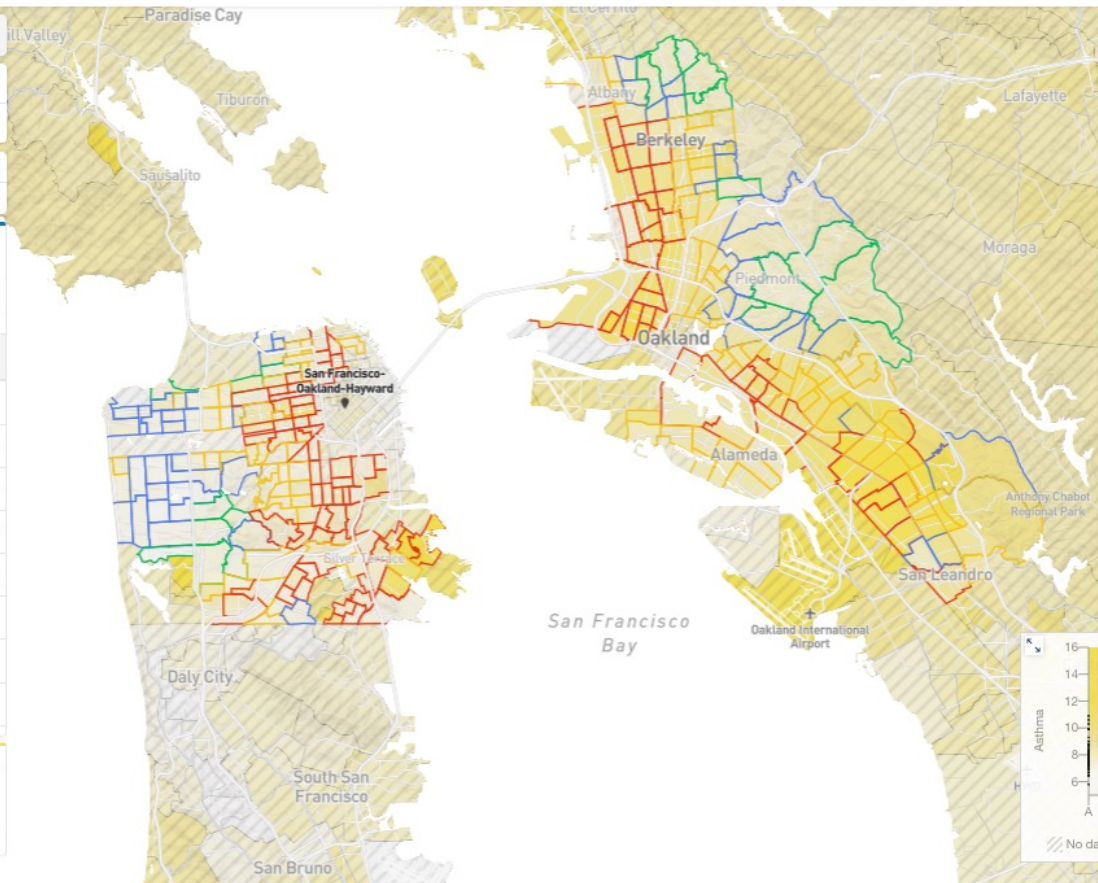
► **Demographic**

► **Socioeconomic**

► [Community](#)

► **Asthma** 9.0%

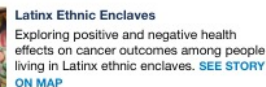
6 12.2



Explore Maps

Take a tour of Health Atlas functionality. [VIEW TOUR](#)

Explore some of the structural, social, and economic challenges affecting California.



- Historical Redlining

ADD TO THE MAP

- Historical Redlining
- Asthma

Demographic Data

Age

- % Under 5 years old
- % Under 18 years old
- % 18-39 years old
- % 40-64 years old
- % 18-64 years old
- % Over 65 years old

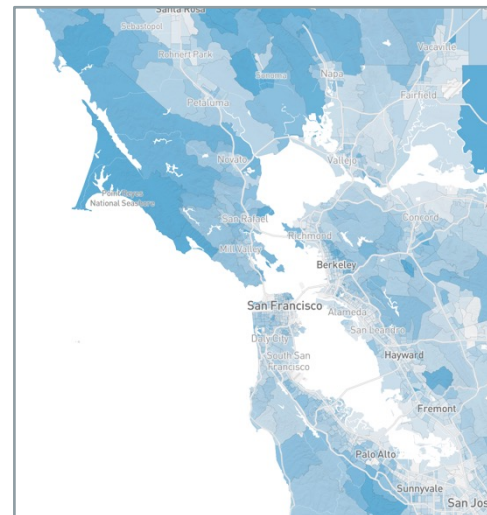
Sex

- % Female
- % Male

Race/ethnicity

- % NH White
- % Black
- % Native American
- % Arab
- % Native Hawaiian and Other Pacific Islander
- % Multiracial

- % **Latinx**
- % Mexican
- % Puerto Rican
- % **Central American**
- % Guatemalan
- % Salvadorian
- % **South American**
- % **Asian**
- % **Southeast Asian**
- % Filipino
- % Vietnamese
- % **East Asian**
- % Chinese
- % Japanese
- % Korean
- % **South Asian**
- % Asian Indian



Over 65 years old

Socioeconomic Data

- SNAP benefits
- Food insecurity
- Preschool enrollment
- No Automobile Access

Socioeconomic Indices

- Neighborhood socioeconomic status
- Social Vulnerability Index
- Healthy Places Index
- Childhood Opportunity Index
- Index of Concentration at the Extremes

Poverty

- Poverty among all families
- Poverty among all families with children under 5
- Poverty among all individuals
- Poverty among individuals under 18
- Poverty among individuals over 65
- Extremely low income households

- Worker earning low wages by place of residence
- Workers earning low wages by place of work
- Persistent poverty

Unemployment

- Unemployed (2015-2019)

Digital Access

- Households with no computer
- Households with no broadband internet

Educational Attainment

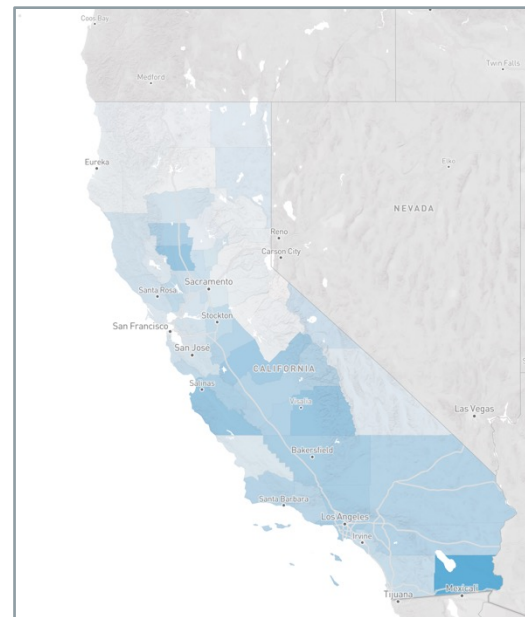
- Less than high school
- Some college or more
- Bachelors or higher

Community Data

- Households with children under 18
- Single Adult Households
- Population density
- Total population
- Incarceration rate
- Seniors living alone
- Linguistically isolated seniors

Ethnic Enclaves and language use

- Asian ethnic enclaves
- Latinx ethnic enclaves
- Foreign born
- Limited English proficiency
- Speak language other than English at home
- Spanish speakers
- East and Southeast Asian language speakers



Spanish speakers

Neighborhood Data

- Rural/Urban

Housing

- Owner occupied housing units
- Renter occupied housing units
- Vacant housing units
- Overcrowding
- Severe rent burden
- Severe mortgage burden
- Severe rent burden among ELI households
- Median rent
- Eviction rate
- Eviction filing rate
- Historical Redlining

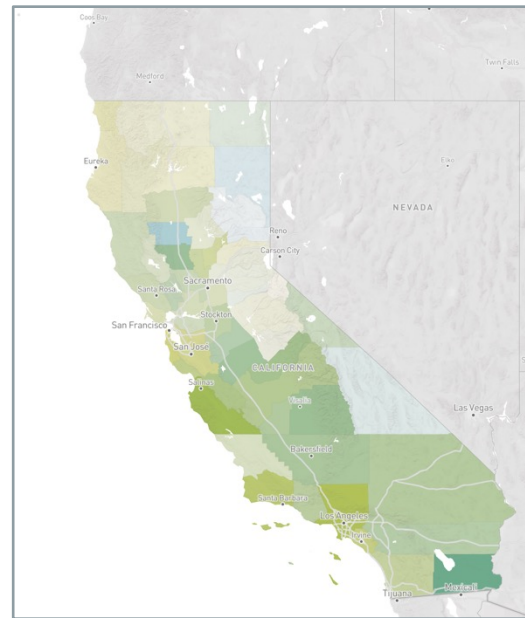
Built Environment

- Street connectivity
- Transit access
- Retail food environment

- Food desert

Environmental Health

- Traffic density
- Ozone
- PM 2.5
- Diesel
- Drinking water
- Pesticides
- Estimated heat days
- Current wildfire risk



Spanish speakers +
Overcrowding

Health Outcomes

- Disability
- Arthritis
- Asthma
- High blood pressure
- High cholesterol
- Chronic kidney disease
- Chronic obstructive pulmonary
- Coronary heart disease
- Diabetes
- Poor mental health
- Poor physical health
- Stroke
- Obesity
- Low birthweight infants
- Asthma ER admissions
- Heart attack ER admissions

- Teen birth
- Life expectancy at birth
- Seniors with disabilities

Health Care Access

- Uninsured
- Uninsured among under 19
- Health Professional Shortage Areas

Healthcare Use

- Annual checkup
- Dental visit
- Taking BP medication
- Cholesterol screening
- Mammography
- Cervical cancer screening
- Colorectal cancer screening
- Preventive care (men)
- Preventive care (women)

Health Behaviors

- Binge drinking
- Current smoking
- Physical inactivity
- Sleep more than 7 hours

COVID-19 Data

Vaccination (from 12/15/20)

- At least one COVID-19 vaccine dose
- Percent with at least one COVID-19 vaccine dose
- Fully vaccinated for COVID-19
- Percent fully vaccinated for COVID-19
- Weekly new COVID-19 vaccine doses per 10,000 people
- COVID-19 Vaccine Equity Metric Quartile

Cases (from 1/26/20)

- COVID-19 cases
- COVID-19 cases per 100,000
- Weekly new COVID-19 cases
- Weekly new COVID-19 cases

Deaths (from 1/26/20)

- COVID-19 deaths
- COVID-19 deaths per 100,000
- Weekly new COVID-19 deaths
- Weekly new COVID-19 deaths per 100,000

Hospitalization (from 4/1/20)

- COVID-19 hospitalized patients
- COVID-19 hospitalized patients per 100,000
- COVID-19 ICU patients
- COVID-19 ICU patients per 100,000

Project Team

UCSF School of Medicine Dean's Office of Population Health and Health Equity

- Kirsten Bibbins-Domingo
- Courtney Lyles
- Debby Oh
- Dan Meltzer
- Kathryn Kemper
- Riya Desai
- Mindy DeRouen
- Alice Fishman
- Salma Shariff-Marco
- Scarlett Gomez
- Jessica Fields

Data Stories

- EatSF
- UCSF Benioff Homelessness and Housing Initiative
- UCSF DREAM Lab

Website

- Stamen Design
- Plain Language Health